



PREMIUM CONNECTING ROD

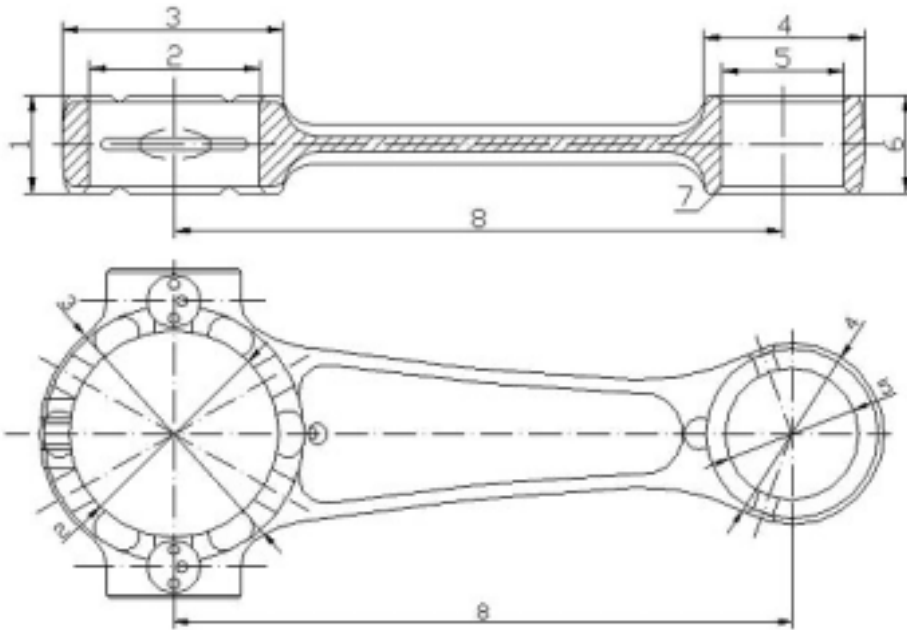
MOTORCYCLE



CAPT. ENGINE TECHNOLOGY Inc.

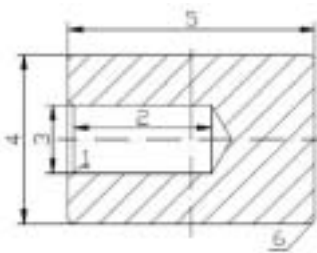
NAME OF PARTS

· Connecting Rod



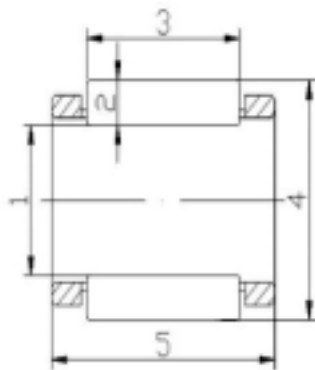
- | | |
|------------------------------|--------------------------------|
| 1 Large-End Thickness | 5 Small-End Bore Diameter |
| 2 Large-End Bore Diameter | 6 Small-End Thickness |
| 3 Large-End Outline Diameter | 7 Chamfer |
| 4 Small-End Outline Diameter | 8 Distance of Two Center Lines |

· Crank Pin



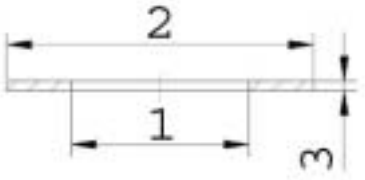
- | | |
|-----------------------|----------------------|
| 1 Chamfer | 4 Periphery Diameter |
| 2 Depth of Drill Hall | 5 Total Length |
| 3 Bore Diameter | 6 Round Chamfer |

· Needle Rollers Bearing



- | | |
|--------------------------|----------------------------------|
| 1 Pin Diameter | 4 Bore Diameter |
| 2 Needle Roller Diameter | 5 Total Height of Needle Bearing |
| 3 Needle Roller Length | |

Washer



- 1 Bore Diameter
2 Periphery Diameter

3 Thickness

Surface Treatment:

CRANK PIN	NEEDLE BEARING		WASHER
	LARGE-END BEARING	SMALL-END BEARING	
Description: D : Central Hole N : New Processing R : Right Side L : Left Side. T : Special Tooling S : Steel Sand spraying TS : Surface with Special Steel Sand spraying	Description: A : Silver-Plating B : Copper Plating Y : Original Steel Color L : Bearing Frame	Description: B : Copper Plating	Description: W : Silver Plating R : Copper Plating B : Black Coating

Material of Connecting Rod:

SCM-415H/SCM-420H (JIS Standard G4104)

Grade	Material NO	Chemical composition %						
		C	Si	Mn	P	S	Cr	Mo
Cr-Mo Steel	SCM 415 (SAE 4105)	0.13~0.18	0.15~0.35	0.60~0.85	0.030 max	0.030 max	0.90~1.20	0.15~0.30

Mechanical Structural Properties

Tensile Yield kgf/mm ²	Elongation %	Enlarge Test	Flatten Test
> 50	> 20	D 1.2D	D 1/2D
> 65	> 10	D 1.1D	D 3/4 D

Heat Treatment of Connecting Rod:

Surface : HRC 59~63 Material Inner : HRC 28~35

Carbonization Depth : 0.8~1.2 mm





PREMIUM CONNECTING ROD

CAPT. No.	Vehicle Model	Part No.	Connecting Rod Spec.					Crank Pin	Remark
			Thickness		Bore Size		Center Distance	Spec.	
			Big End	Small End	Big End	Small End			

EIDGE (Motorcycle)

ED 001	EIDGE	EIDGE	16	25	Φ37	Φ18	175	29*56.3*15	
--------	-------	-------	----	----	-----	-----	-----	------------	--

HONDA (Motorcycle)

HD001	GL145	440	18	18	Φ38	Φ15	103.5	30*54*8	
HD002	CG/ML/TU/XL-125	440	18	18	Φ38	Φ15	103.5	30*54*8	
HD003	CG125-83	440	18	18	Φ38	Φ15	103.5	30*54*8	
HD004	CG440	440	18	18	Φ38	Φ15	103.5	30*54*8	
HD005	GL125	440	18	18	Φ38	Φ15	103.5	30*54*8	
HD006	JH145	440	18	18	Φ38	Φ15	103.5	30*54*8	
HD007	SY125	440	18	18	Φ38	Φ15	103.5	30*54*8	
HD008	TMX	440	18	18	Φ38	Φ15	103.5	30*54*8	
HD009	WY145	440	18	18	Φ38	Φ15	103.5	30*54*8	
HD010	XL125	440	18	18	Φ38	Φ15	103.5	30*54*8	
HD011	Honda145	440	18	18	Φ38	Φ15	103.5	30*54*8	
HD012	Honda 125	440	18	18	Φ38	Φ15	103.5	30*54*8	
HD013	GLPRO	446	18	18	Φ38	Φ15	103.5	30*54*8 D	
HD014	CG125	383	16	16	Φ37	Φ15	103.5	30*54	
HD015	CB100K3	383	16	16	Φ37	Φ15	103.5	30*54	
HD016	CG110	383	16	16	Φ37	Φ15	103.5	30*54	
HD017	CG125-82	383	16	16	Φ37	Φ15	103.5	30*54	
HD018	CG125A	383	16	16	Φ37	Φ15	103.5	30*54	
HD019	GL100	383	16	16	Φ37	Φ15	103.5	30*54	
HD020	WY125	383	16	16	Φ37	Φ15	103.5	30*54	
HD021	Honda125	383	16	16	Φ37	Φ15	103.5	30*54	
HD022	WIN100	GF6	14	14	Φ30.1	Φ13	94	25.1*39	
HD023	C800	GF6	14	14	Φ30.1	Φ13	94	25.1*39	
HD024	C90	GF6	14	14	Φ30.1	Φ13	94	25.1*39	
HD025	CD100	GF6	14	14	Φ30.1	Φ13	94	25.1*39	
HD026	DY100	GF6	14	14	Φ30.1	Φ13	94	25.1*39	
HD027	EX5	GF6	14	14	Φ30.1	Φ13	94	25.1*39	
HD028	GF6	GF6	14	14	Φ30.1	Φ13	94	25.1*39	
HD029	GN5	GF6	14	14	Φ30.1	Φ13	94	25.1*39	
HD030	JC100	GF6	14	14	Φ30.1	Φ13	94	25.1*39	
HD031	JD100	GF6	14	14	Φ30.1	Φ13	94	25.1*39	



PREMIUM CONNECTING ROD

CAPT. No.	Vehicle Model	Part No.	Connecting Rod Spec.					Center Distance	Crank Pin Spec.	Remark
			Thickness		Bore Size					
			Big End	Small End	Big End	Small End				

HONDA (Motorcycle)

HD032	JH100	GF6	14	14	Φ30.1	Φ13	94	25.1*39	
HD033	PRIMA	GF6	14	14	Φ30.1	Φ13	94	25.1*39	
HD034	Da Yang 100	GF6	14	14	Φ30.1	Φ13	94	25.1*39	
HD035	New Honda 100	GF6	14	14	Φ30.1	Φ13	94	25.1*39	
HD036	C100	GF6	14	14	Φ30.1	Φ13	94	25.1*39	
HD037	C70	36	14	14	Φ28.1	Φ13	91	23.1*39	
HD038	36	36	14	14	Φ28.1	Φ13	91	23.1*39	
HD039	C50	36	14	14	Φ28.1	Φ13	91	23.1*39	
HD040	C70MK2	36	14	14	Φ28.1	Φ13	91	23.1*39	
HD041	C75	36	14	14	Φ28.1	Φ13	91	23.1*39	
HD042	DLY90	GW3	13.5	13.5	Φ24	Φ17	91	18*40	
HD043	L9E	GW3	13.5	13.5	Φ24	Φ17	91	18*40	
HD044	Free way 90	GW3	13.5	13.5	Φ24	Φ17	91	18*40	
HD045	GW290	GW3	13.5	13.5	Φ24	Φ17	91	18*40	
HD046	ML100	M100	14	14	Φ30.1	Φ13	88	25.1*39	
HD047	Free way 100	M100	14	14	Φ30.1	Φ13	88	25.1*39	
HD048	MB100	S37 168	14	14	Φ26	Φ19	100	20*48*10	
HD049	NOVAS	S37 168	14	14	Φ26	Φ19	100	20*48*10	
HD050	H100S	S37 168	14	14	Φ26	Φ19	100	20*48*10	
HD051	CH125	M150	14	14	Φ37	Φ15	94	30*43	
HD052	Shark	M150	14	14	Φ37	Φ15	94	30*43	
HD053	Spacy 150	M150	14	14	Φ37	Φ15	94	30*43	
HD054	JH70	GB5	14	14	Φ28.1	Φ13	94	23.1*39	
HD055	C800A	GB5	14	14	Φ28.1	Φ13	94	23.1*39	
HD056	CUSTOM	GB5	14	14	Φ28.1	Φ13	94	23.1*39	
HD057	ASTREA	GB5	14	14	Φ28.1	Φ13	94	23.1*39	
HD058	GB5	GB5	14	14	Φ28.1	Φ13	94	23.1*39	
HD059	SOHRAB	GB5	14	14	Φ28.1	Φ13	94	23.1*39	
HD060	GY6	GY6	14	14	Φ33	Φ15	93.5	28*39	
HD061	GY6125	GY6	14	14	Φ33	Φ15	93.5	28*39	
HD062	Duke 125	GY6	14	14	Φ33	Φ15	93.5	28*39	
HD063	Free way 125	GY6	14	14	Φ33	Φ15	93.5	28*39	
HD064	Princess	GY6	14	14	Φ33	Φ15	93.5	28*43	



PREMIUM CONNECTING ROD

CAPT. No.	Vehicle Model	Part No.	Connecting Rod Spec.				Center Distance	Crank Pin Spec.	Remark
			Thickness		Bore Size				
			Big End	Small End	Big End	Small End			

HONDA (Motorcycle)

HD065	WH125	GY6	14	14	Φ33	Φ15	93.5	28*42.5	
HD066	GY6	GY6	14	14	Φ33	Φ15	93.5	28*45	
HD067	DASH	37...KBP	16	16	Φ28	Φ20	100	22*54*12	
HD068	NOVA-DASH	37...KBP	16	16	Φ28	Φ20	100	22*54*12	
HD069	DASH	37...KBP	16	16	Φ28	Φ20	100	22*54*12S	
HD070	CS90	28	14	14	Φ31	Φ14	97	26*45	
HD071	LD90	GC8	13.5	13.5	Φ22	Φ17	91	16*42	
HD072	Lead 90	GC8	13.5	13.5	Φ22	Φ17	91	16*42	
HD073	DIO50	W2	13.5	13.5	Φ24	Φ17	80	18*33	
HD074	Dio 50	W2	13.5	13.5	Φ24	Φ17	80	18*33	
HD075	Dio-125	W2	13.5	13.5	Φ24	Φ17	80	18*33	
HD076	DIO	W2	13.5	13.5	Φ24	Φ17	80	18*33	
HD 077	DLY50A	W2	13.5	13.5	Φ24	Φ17	80	18*40	
HD078	Lead 50A	W2	13.5	13.5	Φ24	Φ17	80	18*40	
HD079	L5E	W2	13.5	13.5	Φ24	Φ17	80	18*40	
HD080	LD50	AT50	12	12	Φ22	Φ14	80	16*40	
HD081	Lead 50	AT50	12	12	Φ22	Φ14	80	16*40	
HD082	GEMMA50	AT50	12	12	Φ22	Φ14	80	16*40	
HD083	TACT	AT50	12	12	Φ22	Φ14	80	16*40	
HD084	Tact 50	AT50	12	12	Φ22	Φ14	80	16*40	
HD085	Tact 50	AT50	12	12	Φ22	Φ14	80	16*40	
HD086	NH50	AT50	12	12	Φ22	Φ14	80	16*40	
HD087	TJ50	AT50	12	12	Φ22	Φ14	80	16*37	
HD088	Shooter 50	AT50	12	12	Φ22	Φ14	80	16*37	
HD089	CD195	H418	14	14	Φ33	Φ14	91	26*43	
HD090	JH90	LJ90	14	14	Φ28.1	Φ13	95	23.1*39	
HD091	DY90	LJ90	14	14	Φ28.1	Φ13	95	23.1*39	
HD092	CB125T	399	14	14	Φ30	Φ13	91	23*43.5 R	
HD093	CB125T	399	14	14	Φ30	Φ13	91	23*43.5 L	
HD094	L125	KG8	13.5	13.5	Φ24	Φ19	100	18*47.5	
HD095	Lead 125	KG8	13.5	13.5	Φ24	Φ19	100	18*47.5	
HD096	CR125	3.1212	16	16	Φ29	Φ29	104	—	
HD097	CR250	3.1315	16.8	20	Φ31	Φ22	125.2	—	



PREMIUM CONNECTING ROD

CAPT. No.	Vehicle Model	Part No.	Connecting Rod Spec.					Crank Pin	Remark
			Thickness		Bore Size		Center Distance	Spec.	
			Big End	Small End	Big End	Small End			

HONDA (Motorcycle)

HD098	CR80	5009	14.2	14.2	Φ26	Φ18	97	—	
HD099	NSR	KW6	16.85	16.85	Φ31	Φ20	110	24*51*12	
HD 100	NSR150	KW6	16.85	16.85	Φ31	Φ20	110	24*51*12	
HD101	XY50	W2	12	12	Φ24	Φ17	80	18*33	
HD102	Sniper 50	W2	12	12	Φ24	Φ17	80	18*33	
HD103		W2	12	12	Φ24	Φ17	80	18*33	
HD104	XY100	202	13.5	13.5	Φ24	Φ19	91	18*40	
HD105	Sniper 100	202	13.5	13.5	Φ24	Φ19	91	18*40	
HD106	JW90	178	14	14	Φ28.1	Φ15	91	23.1*39	
HD107	90	178	14	14	Φ28.1	Φ15	91	23.1*39	
HD108	C800	178	14	14	Φ28.1	Φ15	91	23.1*39	
HD109	C90	178	14	14	Φ28.1	Φ15	91	23.1*39	
HD110	C900	178	14	14	Φ28.1	Φ15	91	23.1*39	
HD111	GB1	178	14	14	Φ28.1	Φ15	91	23.1*39	
HD112	DIO65	2AB	11.8	11.8	Φ22	Φ17	80	—	
HD113	WAVE110	KFL 8.	14	14	Φ30.1	Φ13	100	25.1*39	
HD114	WAVE	KFL 8.	14	14	Φ30.1	Φ13	100	25.1*39	
HD115	LEGENDA	KFL 8.	14	14	Φ30.1	Φ13	100	25.1*39	
HD116	LEGENDA	KFL 8.	14	14	Φ30.1	Φ13	100	25.1*39	
HD117	WAVE125	KFL N37	14	14	Φ30.1	Φ13	100	25.1*39T	
HD118	BEAT	KBA	14	14	Φ28	Φ20	100	22*48*12	
HD119	FW100	A31 B1	15	15	Φ30	Φ13	85	—	
HD120	100	A31 B1	15	15	Φ30	Φ13	85	—	
HD121	NEO TECH	KYO	18	18	Φ38	Φ15	105.5	30*54*8	
HD122	GLPRO NEO TECH	KYO	18	18	Φ38	Φ15	105.5	30*54*8	
HD123	CBX200	KYO	18	18	Φ38	Φ15	105.5	30*54*8	
HD124	CG/TODAY/CBX	KYO	18	18	Φ38	Φ15	105.5	30*54*8	
HD125	CG125CDI	KYO	18	18	Φ38	Φ15	105.5	30*54*8	
HD126	TODAY	KYO	18	18	Φ38	Φ15	105.5	30*54*8	
HD127	CB100K2	H107 2	15.8	15.8	Φ36	Φ14	103.5	30*54	
HD128	C700	S97	14	14	Φ28.1	Φ13	91	23.1*39	
HD129	XL250R	S15...471	20	20	Φ41	Φ19	113	33*61	
HD130	XLX350R	KL3	20	20	Φ47	Φ19	116	38*57.5	



PREMIUM CONNECTING ROD

CAPT. No.	Vehicle Model	Part No.	Connecting Rod Spec.					Crank Pin	Remark
			Thickness		Bore Size		Center Distance	Spec.	
			Big End	Small End	Big End	Small End			

HONDA (Motorcycle)

HD131	XLX250R	KGO 3.	20	20	Φ41	Φ19	116	33*57.5	
HD132	NX150	KW1 6.	18	18	Φ38	Φ15	105.5	30*54*8N	
HD133	CBX	KW1 6.	18	18	Φ38	Φ15	105.5	30*54*8N	
HD134	CBX150	KW1 6.	18	18	Φ38	Φ15	105.5	30*54*8N	
HD135	CD70C	40.GB2	14	14	Φ28.1	Φ13	93	23.1*39	
HD136	CD70F	40.GB2	14	14	Φ28.1	Φ13	93	23.1*39	
HD137	GY90	40.GB2	14	14	Φ28.1	Φ13	93	23.1*39	
HD138	CB100K1	H 107	14	14	Φ32	Φ14	103.5	26*56	
HD139	JET	JET	10	10	Φ21	Φ18	85	16*40*5	
HD140	DREAM	KFM 16	14	14	Φ30.1	Φ13	97	25.1*39	
HD141	DREAM EXCESS	KFM 16	14	14	Φ30.1	Φ13	97	25.1*39	
HD142	EXCESS	KFM 16	14	14	Φ30.1	Φ13	97	25.1*39	
HD143	LEGENDA	KFM16	14	14	Φ30.1	Φ13	97	25.1*39	
HD144	QQ90	See P6A	13.5	13.5	Φ24	Φ17	85	—	
HD145	Cha Cha 90	See P6A	13.5	13.5	Φ24	Φ17	85	—	
HD146	90	See P6A	13.5	13.5	Φ24	Φ17	85	—	
HD147	DY100	KHC 41	14	14	Φ30.1	Φ13	85	25.1*38.9T	
HD148	100	KHC 41	14	14	Φ30.1	Φ13	85	25.1*38.9T	
HD149	WH100	GCC	14	14	Φ30.1	Φ13	85	25.1*38.9T	
HD150	NOVAS-B	HISPEED RACING	14	14	Φ26	Φ20	100	20*48*10	
HD151	HONDA1300	3.13	17	17	Φ31	Φ22	130.5	—	
HD152	ANGEL	X01	15	15	Φ30	Φ13	85	—	
HD153	SONIC125	KGH 7	16	16	Φ36	Φ13	87.5	28*47	
HD154	SONIC	KGH 7	16	16	Φ36	Φ13	87.5	28*47	
HD155	SL230		18	18	Φ38	Φ15	110	—	
HD156	C50C	GK4 6	14	14	Φ24	Φ13	94	19*39	
HD157	GB4	GK4 6	14	14	Φ24	Φ13	94	19*39	
HD158	GK4	GK4 6	14	14	Φ24	Φ13	94	19*39	
HD159	GY6100	GY100	14	14	Φ30.1	Φ13	98.6	25.1*38.9	
HD160	JW100	M3B	15	15	Φ30	Φ15	86.5	25*38	
HD161	100	M3B	15	15	Φ30	Φ15	86.5	25*38	
HD162	GY6N	GY6	14	14	Φ33	Φ15	93.9	—	
HD163	WIN100N	M.M.I./128	14	14	Φ30.1	Φ13	92	—	



PREMIUM CONNECTING ROD

CAPT. No.	Vehicle Model	Part No.	Connecting Rod Spec.					Center Distance	Crank Pin Spec.	Remark
			Thickness		Bore Size					
			Big End	Small End	Big End	Small End				

HONDA (Motorcycle)

HD164	TITAN2000	KGA	16	16	Φ36	Φ13	105.5	Φ28*54*8	
HD165	TITAN2003	KGA	16	16	Φ36	Φ13	105.5	Φ28*54*8	
HD166	CH250	KMI 20	18	18	Φ40	Φ17	103	32*49.5	

KAWASAKI (Motorcycle)

KA001	GTO125	MIG	14	16	Φ28	Φ19	99	22*46.5*12S	
KA002	GTO110	MIG	14	16	Φ28	Φ18	99	22*46.5*12S	
KA003	GTO	MIG	14	16	Φ28	Φ18	99	22*46.5*12S	
KA004	KH100	MIG	14	16	Φ28	Φ18	99	19*46.5	
KA005	G7T	MIG	14	16	Φ28	Φ18	99	19*46.5	
KA006	G7S	MIG	14	16	Φ28	Φ18	99	19*46.5	
KA007	AR125	M2G	14	16	Φ28	Φ19	99	22*53S	
KA008	TUXEDO	1148	14	14	Φ28	Φ16	94	22*39.5*12S	
KA009	KR150	1159 27	17	17	Φ29	Φ19	104	22*54S	
KA010	LEO	1214 4	14	16	Φ28	Φ18	99	22*46.5*12S	
KA011	KX250	1224 2.	20	22	Φ32	Φ22	125	—	
KA012	KX60	1031 9	14	14	Φ27	Φ16	85	—	
KA013	KRISS	158 1	14	14	Φ29	Φ13	100	22*42S	
KA014	KAZE	158 1	14	14	Φ29	Φ13	100	22*42S	
KA015	KX80	8006	14	16	Φ29	Φ18	92	—	
KA016	B1	B1	15	18	Φ30.64	Φ20	115	24.64*57	
KA017	GTO125N	M3G	14	16	Φ28	Φ19	99	22*46.5*12S	
KA018	GTO/4	M3G	14	16	Φ28	Φ19	99	22*46.5*12S	
KA019	GTOM4	M3G	14	16	Φ28	Φ19	99	22*46.5*12S	
KA020	M8H	M8H	15	18	Φ30.64	Φ20	110	—	
KA021	TK021	S1..HH	17	18	Φ35	Φ21	120	—	
KA 022	CR112	S1..HH	15	15	30	22	120	—	
KA 023	CR111	S1..HH	17	17	31	22	120	—	
KA024	TK013	RD005	20	22	Φ36	Φ27	133	—	
KA025	AN90	T103 1.7.1	14	14	Φ30.1	Φ13	103	25.1*39	
KA026	WAVE	T103 1.7.1	14	14	Φ30.1	Φ13	103	25.1*39	
KA027	TH048	TD1001	14	14	Φ30.1	Φ13	103	25.1*39	
KA028	C110	TD1001	14	14	Φ30.1	Φ13	103	25.1*39	
KA029	TK016	RD016	20	22	Φ34	Φ27	135	—	



PREMIUM CONNECTING ROD

CAPT. No.	Vehicle Model	Part No.	Connecting Rod Spec.				Center Distance	Crank Pin Spec.	Remark
			Thickness		Bore Size				
			Big End	Small End	Big End	Small End			

KAWASAKI (Motorcycle)

KA030	CHEER	250 21.	14	14	Φ29	Φ13	100.1	22*42S	
KA031	TK015	RD003	20	22	Φ32	Φ22	133	—	
KA032	TK014	RD004	20	22	Φ34	Φ25	133	—	
KA033	BAJAJ150		16	16	Φ38	Φ17	111.3	30*45.5	

PIAGGIO (Motorcycle)

PG 001	TYPHOON125		14.8	14.8	26	20	105	20.01*45.5*7	
--------	------------	--	------	------	----	----	-----	--------------	--

SACHS (Motorcycle)

SA 001	SACHS125	0617.103.098	12	12	Φ26	Φ19	110	20*54.2*7	
--------	----------	--------------	----	----	-----	-----	-----	-----------	--

STIHL (Motorcycle)

ST 001	1106	1106	13	19	Φ25	Φ19	73	19*37.2*7	
ST002	70	ITY	13	19	Φ25	Φ19	73	19*37.2*7	
ST 003	38	1119	8.5	13	Φ22	Φ16	62	16*28*6	
ST 004	lawn mower		12	12	Φ19	Φ8	56	—	
ST 005	51	1111	10	17.5	Φ24	Φ17	78	18*33	
ST 006	MOWE	1111	10	17.5	Φ24	Φ17	78	18*33	
ST 007	RLAWN	1111	10	17.5	Φ24	Φ17	78	18*33	
ST 008	44	1128	8.7	15	Φ22	Φ15	62	16*27*6	
ST 009	66	*1122	10	12	Φ22	Φ17	68	16*31*6	
ST 010	08S	1108	8.5	13	Φ20.4	Φ16	58	14.4*34*6	
ST 011	B5A		8.5	13	20.4	14	58	—	

SUZUKI (Motorcycle)

SK 001	A100	120	15.85	18	Φ25	Φ18	100	19*50	
SK 002	GP125	120	15.85	18	Φ25	Φ18	100	19*50	
SK 003	TS125	120	15.85	18	Φ25	Φ18	100	19*50	
SK 004	TF125	120	15.85	18	Φ25	Φ18	100	19*47.5*7	
SK 005	TS100C	S120-2.31	15.85	18	Φ25	Φ18	100	19*56*7	
SK 006	GS125	GS125	16	16	Φ36	Φ14	106.4	28*53	
SK 007	SUZUKI 125	GS125	16	16	Φ36	Φ14	106.4	28*53	
SK 008	AN125	GS125	16	16	Φ36	Φ14	106.4	28*44S	
SK 009	TR125	3931	15.85	18	Φ28	Φ18	100	22*50*12S	
SK 010	GT125	3931	15.85	18	Φ28	Φ18	100	22*50*12S	
SK 011	125	3931	15.85	18	Φ28	Φ18	100	22*50*12S	
SK 012	AX100	23400	16.9	16.9	Φ26	Φ18	100	20*50*10	



PREMIUM CONNECTING ROD

CAPT. No.	Vehicle Model	Part No.	Connecting Rod Spec.					Crank Pin	Remark
			Thickness		Bore Size		Center Distance	Spec.	
			Big End	Small End	Big End	Small End			

SUZUKI (Motorcycle)

SK 013	K90	K90	16	16	Φ25	Φ18	95	19*50*5	
SK 014	K100	K90	16	16	Φ25	Φ18	95	19*50*5	
SK 015	KMW	K90	16	16	Φ25	Φ18	95	19*50*5	
SK 016	QM100	K90	16	16	Φ25	Φ18	95	19*50*5	
SK 017	A50	350	12	12	Φ22	Φ16	79.9	16*39.4	
SK 018	A50	350	12	12	Φ22	Φ16	79.9	16*44*4	
SK 019	A50	350	12	12	Φ22	Φ16	79.9	16*46*4	
SK 020	FR50	350	12	12	Φ22	Φ16	79.9	16*46*4	
SK 021	FZ50	350	12	12	Φ22	Φ16	79.9	16*46*4	
SK 022	RC100	354 71	15.9	14	Φ26	Φ16	93.9	20*45S	
SK 023	RC80	354 71	15.9	14	Φ26	Φ16	93.9	20*45S	
SK 024	RC110	354 71	15.9	14	Φ26	Φ16	93.9	20*45S	
SK 025	FR80	050 99	15.65	14.15	Φ25	Φ16	87.9	19*50	
SK 026	A80	050 99	15.65	14.15	Φ25	Φ16	87.9	19*50	
SK 027	FR80N	050 99	15.65	14.15	Φ25	Φ16	87.9	19*50	
SK 028	AKIRA	21D 23	15.9	14	Φ26	Φ18	93.9	20*45S	
SK 029	RU110	21D 23	15.9	14	Φ26	Φ18	93.9	20*45S	
SK 030	STARIA	21D 23	15.9	14	Φ26	Φ18	93.9	20*45S	
SK031	AD50	37B	12	12	Φ22	Φ14	74.9	16*34	
SK032	Address 50	37B	12	12	Φ22	Φ14	74.9	16*34	
SK033	50	37B	12	12	Φ22	Φ14	74.9	16*34	
SK 034	DJI	37B	12	12	Φ22	Φ14	74.9	16*33	
SK 035	50	37B	12	12	Φ22	Φ14	74.9	16*33	
SK 036	AE50	37B	12	12	Φ22	Φ14	74.9	16*33	
SK 037	AG50	37B	12	12	Φ22	Φ14	74.9	16*33	
SK 038	ELITE	37B	12	12	Φ22	Φ14	74.9	16*33	
SK 039	50	37B	12	12	Φ22	Φ14	74.9	16*33	
SK 040	K125	S08002	17	18	Φ26	Φ20	117	20*49	
SK 041	B120	110...68	17	18	Φ26	Φ18	109.9	20*48.5	
SK 042	FB100	30A	15	14	Φ31	Φ14	96.4	26*40S	
SK 043	SHOGUN	30D 83	17	14	Φ34	Φ14	97.9	28*42	
SK 044	SHOGUN	30D 83	17	14	Φ34	Φ14	97.9	28*42S	
SK 045	BEST	30D 83	17	14	Φ34	Φ14	97.9	28*42S	



PREMIUM CONNECTING ROD

CAPT. No.	Vehicle Model	Part No.	Connecting Rod Spec.					Center Distance	Crank Pin Spec.	Remark
			Thickness		Bore Size					
			Big End	Small End	Big End	Small End				

SUZUKI (Motorcycle)

SK 046	FD115	30D 83	17	14	Φ34	Φ14	97.9	28*42S	
SK 047	VIVA	30D 83	17	14	Φ34	Φ14	97.9	28*42S	
SK 048	AG100	04C	13.85	13.85	Φ26	Φ16	93.9	20*39*10S	
SK 049	100	04C	13.85	13.85	Φ26	Φ16	93.9	20*39*10S	
SK 050	100	04C	13.85	13.85	Φ26	Φ16	93.9	20*39*10S	
SK 051	Winner 100	04C	13.85	13.85	Φ26	Φ16	93.9	20*39*10S	
SK 052	219	984 21	10	14	Φ21	Φ16	74.9	—	
SK 053	SWING	31C 6	15.85	14	Φ26	Φ18	96.9	20*45S	
SK 054	SWINING	31C 6	15.85	14	Φ26	Φ18	96.9	20*45S	
SK 055	TS026-15HP	939 88	15.9	15.9	Φ27	Φ18	95	—	
SK 056	BS100	BS-100	14	14	Φ25	Φ18	100	19*48.5*7	
SK 057	BS125	BS-125	16	16	Φ30	Φ21	116	24*57*12	
SK 058	BS135	BS-125	16	16	Φ30	Φ21	116	24*57*12	
SK 059	AG125		15.9	14.1	Φ28	Φ18	105	22*49*12	
SK 060	125		15.9	14.1	Φ28	Φ18	105	22*49*12	
SK 061	GS125N	04B	16	17	Φ36	Φ14	107.7	28*53	
SK 062	GS125R	04B	16	17	Φ36	Φ14	107.7	28*53	
SK 063	RGV	12B..41	15.9	17.9	Φ28	Φ18	105	22*50S	
SK 064	TX150	12B..41	15.9	17.9	Φ28	Φ18	105	22*50S	
SK065	ST30	790RD	17.7	22	Φ34	Φ20	113	25*56*10	
SK 066	BEST	30D83	17	14	Φ34	Φ14	97.9	—	
SK 067	ST20	67002	15.9	23.9	Φ32.3	Φ20	113	23.3*56	
SK 068	MINK	MINK	15.95	15.95	Φ27	Φ18	125	—	
SK 069	SMAZE	D9G 17	17	17	Φ34	Φ14	97.9	28*42S	
SK 070	GEMMA50	GS50	12	12	Φ22	Φ14	80	16*40	
SK 071	RV185	944 39	21.5	21.5	Φ37	Φ26	125	—	

TAS (Motorcycle)

TS 001	TS328	T32/6	10	10	Φ17	Φ13	58.5	12*23.5*5	
TS 002	328	T32/6	10	10	Φ17	Φ13	58.5	12*23.5*5	
TS 003	318	T32/6	10	10	Φ17	Φ13	58.5	12*23.5*5	
TS 004	TS221	QS	9.8	9.8	Φ14	Φ13	58.5	—	
TS 005	221	QS	9.8	9.8	Φ14	Φ13	58.5	—	



PREMIUM CONNECTING ROD

CAPT. No.	Vehicle Model	Part No.	Connecting Rod Spec.				Center Distance	Crank Pin Spec.	Remark
			Thickness		Bore Size				
			Big End	Small End	Big End	Small End			

VESPA (Motorcycle)

VP 00	VESPA/STD	3760/S	15.4	15.4	Φ29	Φ19	105	22*39TO/M	
VP 002	VESPA	3760/S	15.4	15.4	Φ29	Φ19	105	22*29	
VP 003	P150X	3760/S	15.4	15.4	Φ29	Φ19	105	22*29	
VP 004	BAJAJ	3760/S	15.4	15.4	Φ29	Φ19	105	22*29	
VP 005	V/PSUPER	3760/S	15.4	15.4	Φ29	Φ19	105	22*29	
VP 006	VESPA150	3760/S	15.4	15.4	Φ29	Φ19	105	22*29	
VP 007	VESPA150XN/M	3760/S	15.4	15.4	Φ29	Φ19	105	22*29	
VP 008	150	3760/S	15.4	15.4	Φ29	Φ19	105	22*29	
VP 009	VESPA+	3760/S	15.5	15.5	Φ29	Φ19	105	—	
VP 010	BRAVO50	4420/SGF	9.85	9.85	Φ21	Φ13	87	16*33	

YAMAHA (Motorcycle)

YA001	YB100	164	14	14	Φ28	Φ18	100	22*49*12S	
YA002	YB100	164	14	14	Φ28	Φ18	100	22*49*12	
YA003	YL2	164	14	14	Φ28	Φ18	100	22*49*12	
YA004	YL2G	164	14	14	Φ28	Φ18	100	22*49*12	
YA005	CY80	IW7	11.5	11.5	Φ26.035	Φ15	94	20.035*46S	
YA006	CY80	IW7	11.5	11.5	Φ26.035	Φ15	94	20.035*46	
YA007	MATE90	IW7	11.5	11.5	Φ26.035	Φ15	94	20.035*46	
YA008	V80	IW7	11.5	11.5	Φ26.035	Φ15	94	20.035*46	
YA009	Y80	IW7	11.5	11.5	Φ26.035	Φ15	94	20.035*46	
YA010	Y80M	IW7	11.5	11.5	Φ26.035	Φ15	94	20.035*46	
YA011	Mate 80	IW7	11.5	11.5	Φ26.035	Φ15	94	20.035*46	
YA012	CY80+	IW7	11.6	11.6	Φ26.035	Φ15	94	—	
YA013	DX100	558	15	15	Φ28	Φ18	100	22*49*12	
YA014	19V	558	15	15	Φ28	Φ18	100	22*49*12	
YA015	RX100	558	15	15	Φ28	Φ18	100	22*49*12	
YA016	RS100	558	15	15	Φ28	Φ18	100	22*48.5*12	
YA017	RX125	4Y2	16	16	Φ28	Φ20	100	22*54.5*12	
YA018	DT125	4Y2	16	16	Φ28	Φ20	100	22*54.5*12	
YA019	NF125	4Y2	16	16	Φ28	Φ20	100	22*54.5*12	
YA020	RD135	4Y2	16	16	Φ28	Φ20	100	22*54.5*12	
YA021	RS125	4Y2	16	16	Φ28	Φ20	100	22*54.5*12	
YA022	RX135	4Y2	16	16	Φ28	Φ20	100	22*54.5*12	



PREMIUM CONNECTING ROD

CAPT. No.	Vehicle Model	Part No.	Connecting Rod Spec.				Center Distance	Crank Pin Spec.	Remark
			Thickness		Bore Size				
			Big End	Small End	Big End	Small End			

YAMAHA (Motorcycle)

YA023	RXK	4Y2	16	16	Φ28	Φ20	100	22*54. 5*12	
YA024	125	4Y2	16	16	Φ28	Φ20	100	22*54. 5*12	
YA025	DTK125	4Y2	16	16	Φ28	Φ20	100	22*54. 5*12	
YA026	DT175	4Y2	16	16	Φ28	Φ20	100	22*54. 5*12	
YA027	LF90	48N00	11.6	15.6	Φ24.035	Φ15	84	18.035*37*8	
YA028	90	48N00	11.6	15.6	Φ24.035	Φ15	84	18.035*37*8	
YA029	48N	48N00	11.6	15.6	Φ24.035	Φ15	84	18.035*37*8	
YA030	LB50	48N00	11.6	15.6	Φ24.035	Φ15	84	18.035*37*8	
YA031	YB50	48N00	11.6	15.6	Φ24.035	Φ15	84	18.035*37*8	
YA032	90	48N00	11.6	15.6	Φ24.035	Φ15	84	18.035*37*8	
YA033	90	48N00	11.6	15.6	Φ24.035	Φ15	84	18.035*37*8	
YA034	MJ50	48N00	11.6	15.6	Φ24.035	Φ15	84	18.035*37*8	
YA035	LF90	48N00	11.6	15.6	Φ24.035	Φ15	84	18.035*42.5*8	
YA036	LF90+	48N00	11.8	15.5	Φ24.035	Φ15	84	—	
YA037	Y100	2JG	14	14	Φ26.035	Φ18	96	20.035*49*10S	
YA038	Y100	2JG	14	14	Φ26.035	Φ18	96	20.035*49*10T S	
YA039	Y110	2JG	14	14	Φ26.035	Φ18	96	20.035*49*10T S	
YA040	ALFA	2JG	14	14	Φ26.035	Φ18	96	20.035*49*10T S	
YA041	TZR150	3RR	18	18	Φ31	Φ21	105	24*57. 5*12	
YA042	TZR	3RR	18	18	Φ31	Φ21	105	24*57. 5*12	
YA043	RS125	479	16	18	Φ28	Φ20	100	22*54.5*12	
YA044	RS125	479	16	18	Φ28	Φ20	100	22*54. 5*12S	
YA045	DF50	AT50	11.8	11.8	Φ22.035	Φ14	80	16.035*37	
YA046	50	AT50	11.8	11.8	Φ22.035	Φ14	80	16.035*37	
YA047	AT50	AT50	11.8	11.8	Φ22.035	Φ14	80	16.035*37	
YA048	CT50	AT50	11.8	11.8	Φ22.035	Φ14	80	16.035*37	
YA049	JOG	AT50	11.8	11.8	Φ22.035	Φ14	80	16.035*37	
YA050	JOG50	AT50	11.8	11.8	Φ22.035	Φ14	80	16.035*37	
YA051	JOGGY50	AT50	11.8	11.8	Φ22.035	Φ14	80	16.035*37	
YA052	SA50	AT50	11.8	11.8	Φ22.035	Φ14	80	16.035*37	
YA053	ET900	AT50	11.8	11.8	Φ22.035	Φ14	80	16.035*37	
YA054	JF50	AT50	11.8	11.8	Φ22.035	Φ14	80	16.035*37S	
YA055	50	AT50	11.8	11.8	Φ22.035	Φ14	80	16.035*37S	



PREMIUM CONNECTING ROD

CAPT. No.	Vehicle Model	Part No.	Connecting Rod Spec.					Center Distance	Crank Pin Spec.	Remark
			Thickness		Bore Size					
			Big End	Small End	Big End	Small End				

YAMAHA (Motorcycle)

YA056	YG150	3UHI	16	16	Φ31	Φ15	112	26*47	
YA057	150	3UHI	16	16	Φ31	Φ15	112	26*47	
YA058	ET1500	ET-1500	14	14	Φ26.035	Φ18	100	20.035*47.5	
YA059	V50	517	11.5	11.5	Φ24.035	Φ15	84	18.035*37*8	
YA060	V75	517	11.5	11.5	Φ24.035	Φ15	84	18.035*37*8	
YA061	FS80	517	11.5	11.5	Φ24.035	Φ15	84	18.035*37*8	
YA062	V50	517	11.8	11.8	Φ24.035	Φ15	84	—	
YA063	XG125	4CW1	14	14	Φ31	Φ13	98	26*43.5	
YA064	125	4CW1	14	14	Φ31	Φ13	98	26*43.5	
YA065	4CW125	4CW1	14	14	Φ31	Φ13	98	26*43.5	
YA066	LY125	4CW1	14	14	Φ31	Φ13	98	26*43.5	
YA067	ZY125	4CW1	14	14	Φ31	Φ13	98	26*43.5	
YA068	125	4CW1	14	14	Φ31	Φ13	98	26*43.5	
YA069	RXZ	55K	16	16	Φ29	20	105	22*53*12	
YA070	RXZ	55K	16	16	Φ29	20	105	22*53*12S	
YA071	YB125	137	15	16.5	Φ30	Φ20	120	24*49.5*12	
YA072	819.680-8HP	6E001/A	14	14	Φ24.035	Φ15	84	—	
YA073	DWG1-25HP	64802	18	18	Φ29	Φ22	110	—	
YA074	YZ125	TVS	17	16	Φ29	Φ20	105	—	
YA075	6H4	119...33	18	18	Φ29	Φ22	116	—	
YA076	4019	119...33	18	18	Φ29	Φ22	116	—	
YA077	YZ250	6002	20	20	Φ31	Φ23	125	—	
YA078	TY007-25HP	68900 33	20	20	Φ32	Φ23.9	110	—	
YA079	ET500	ET500	12	12	Φ22	Φ14	80	16*37	
YA080	YB80	180	11.5	15.5	Φ24	Φ15	89	18*42.5	
YA081	VR150	2JK/F	17	18	Φ29	Φ21	105	22*56.5*12	
YA082	CRYPTON	4ST	14	14	Φ31	Φ13	92	26*42	
YA083	RAINBOW	4ST	14	14	Φ31	Φ13	92	26*42	
YA084	T110	4ST	14	14	Φ31	Φ13	92	26*42	
YA085	FRESJ	5HV/A	14	14	Φ31	Φ13	92	26*42	
YA086	JUPITER	5TN	14	14	Φ31	Φ13	92	26*42	
YA087	DT180	2N4	16	16	Φ28	Φ20	105	22*54.5*12	
YA088	DT125MX	2N4	16	16	Φ28	Φ20	105	22*54.5*12	



PREMIUM CONNECTING ROD

CAPT. No.	Vehicle Model	Part No.	Connecting Rod Spec.					Crank Pin	Remark
			Thickness		Bore Size		Center Distance	Spec.	
			Big End	Small End	Big End	Small End			

YAMAHA (Motorcycle)

YA089	RD350	Y29L	17	18	Φ29	Φ21	110	—	
YA090	RD350Z	Y29L	17	18	Φ29	Φ21	110	—	
YA091	MJSD	5CA	16	16	Φ37	Φ15	98.5	29*47	
YA092	Majesty	5CA	16	16	Φ37	Φ15	98.5	29*47	
YA093	FG125	4TE	16	14	Φ31	Φ13	98	—	
YA094	125	4TE	16	14	Φ31	Φ13	98	—	
YA095	FG125+	4TE	16	14	Φ33	13	98	—	
YA096	RXS	4X8	16	16	Φ28	Φ18	100	22*55*12S	
YA097	RXS	4X8	16	16	Φ28	Φ18	100	22*55*12	
YA098	RX115	4X8	16	16	Φ28	Φ18	100	22*55*12	
YA099	JR120	4X8	16	16	Φ28	Φ18	100	22*53*12	
YA100	BWS100	4VP	11.6	15.1	Φ24.035	Φ18	90	18.035*37*8	
YA101	TY003-15HP	65004/N	14	14	Φ28.035	Φ18	90	20.035*46*10	
YA102	TY001-40HP	6F5/68	21	21	Φ36	Φ24.9	125	27*60.5*12.5	
YA103	DT125	248	16	18	Φ28	Φ20	105	22*54.5*12	
YA104	TY023-50HP	6K500	18	18	Φ36	Φ24.9	121	—	
YA105	TY023-60HP	6K500	18	18	Φ36	Φ24.9	121	—	
YA106	TY051	3TBJ	22	22	Φ43	Φ22	135.5	—	
YA107	48HP	688	21	21	Φ39	Φ24.9	115	—	
YA108	TZR125	2RH/O	17	17	Φ29	Φ21	105	22*56.5*12	
YA109	RD125	1GU/E	16	18	Φ29	Φ21	110	22*54.5*12	
YA110	SRZ150	3UR	20	20	Φ37	Φ15	100.5	30*55	
YA111	125	3UR	20	20	Φ37	Φ15	100.5	30*55	
YA112	XC125	50M	14	14	Φ31	Φ13	112	26*43.5	
YA113	XWZ100	5HK	14	14	Φ31	Φ13	88.5	—	
YA114	100	5HK	14	14	Φ31	Φ13	88.5	—	
YA115	FZR150	3KW	14	14	Φ38	Φ13	147.5	31*67	
YA116	6L2	6L2	18	18	Φ32	Φ21.9	98	—	
YA117	DT200	43G	17	18	Φ29	Φ21	110	22*56.5*12	
YA118	XWZ-GC	5HKL	14	14	Φ33	Φ15	88.5	Φ26*42	
YA119	XWZ	5HKL	14	14	Φ33	Φ15	88.5	Φ26*42	
YA120	NOUVO	5LW	14	14	Φ35	Φ15	93.5	Φ28*39.5	
YA121	XG125A	4CW1	14	14	Φ31	Φ15	98	—	



PREMIUM CONNECTING ROD

CAPT. No.	Vehicle Model	Part No.	Connecting Rod Spec.					Center Distance	Crank Pin Spec.	Remark
			Thickness		Bore Size					
			Big End	Small End	Big End	Small End				

YAMAHA (Motorcycle)

YA122	125N	4CW1	14	14	Φ31	Φ15	98	—	
YA123	RD250	930 30	17	17	Φ28	Φ21	110	22*56. 5*12S	
YA124	TS185	930 30	17	17	Φ28	Φ21	110	22*56. 5*12S	
YA125	11087	R12	14	14	Φ35	Φ15	93.5	—	
YA126	11088	R12	14	14	Φ33	Φ15	88.5	—	

New Development & other models (Motorcycle)

OT 001	LS50	GJ5	12	12	Φ19	Φ14	75	14*33	
OT 002	MBK	XC45	12	8. 8	Φ22. 2	Φ16	85	15. 2*38	
OT 003	MOBYLETE	XC45	12	8. 8	Φ22. 2	Φ16	85	15. 2*38	
OT 004	MOB1LETE	XC45	12	8. 8	Φ22. 2	Φ16	85	15. 2*38	
OT 005	PG50	2KL	12	12	Φ20.11	Φ15	76	14.11*36	
OT 006	PG50 O/M	2KL	12	12	Φ20.11	Φ15	76	14.11*36	
OT 007	PG50F	2KL	12	12	Φ22	Φ15	76	16*36	
OT 008	PG50D	DAKAR	12	12	Φ20.11	Φ15	76	14.11*36	
OT 009	G4K	H-6-1400	10	10	Φ19	Φ15	61	14*28. 5*9	
OT 010	TL43	T200	10	9	Φ20	Φ13	62	15*29*10	
OT 011	TD40	TD-40	10	10	Φ19	Φ14	62	14*25*9	
OT 012	NB411	22B	10	10	Φ17	Φ14	60	12*29. 5*5	
OT 013	040R	22B	10	10	Φ17	Φ14	60	12*29. 5*5	
OT 014	AG27.5	7015002006998J	16	16	Φ29	Φ20	110	22*50. 5*12	
OT 015	AG16.5	7015002006998J	16	16	Φ29	Φ20	110	22*50. 5*12	
OT 016	AGRALE	7015002006998J	16	16	Φ29	Φ20	110	22*50. 5*12	
OT 017	TO54	RD015	20	20	Φ36	Φ25	140	—	
OT 017	TO53	RD013	17. 9	17. 9	Φ35	Φ24	140	—	
OT 017	TO82	CM1AB	16	20	Φ36	Φ18	140	—	
OT 018	40		10	10	Φ17	Φ13	66	—	
OT 019	26		8	8	Φ12	Φ11	53	—	
OT 020	CR108	58	15. 8	15. 8	Φ32. 3	Φ20	112	—	
OT 021	CR100	58	15. 8	15. 8	Φ32. 3	Φ23	112	—	
OT 022	T103		7	7	Φ14	Φ11	50	10*22*5. 5	
OT 023	TO51	RD010	16. 9	16. 9	Φ30	Φ25	125	—	
OT 024	TO48	RD001	16. 9	16. 9	Φ30	Φ22	125	—	
OT 025	TO49	RD007	20	20	Φ32	Φ25	125	—	



PREMIUM CONNECTING ROD

CAPT. No.	Vehicle Model	Part No.	Connecting Rod Spec.					Crank Pin	Remark
			Thickness		Bore Size		Center Distance	Spec.	
			Big End	Small End	Big End	Small End			

New Development & other models (Motorcycle)

OT 026	TO52	RD011-12	17.9	17.9	Φ33	Φ24	125	—	
OT 027	TO86	CR104/105	16	16	Φ32.3	Φ23	125	—	
OT 028	TO87	CR106/107	16	16	Φ32	Φ23	125	—	
OT 029	TO77	RD023	21	21	Φ34	Φ27	135	—	
OT 030	MZ125	12-43.035	16.9	16.9	Φ31	Φ19	125	25*49	
OT 031	TO83	RD025	18	18	Φ35	Φ27	136	—	
OT 032	TO71	RD014	16	16	Φ35	Φ25	136	—	
OT 033	K80	K80	11.8	11.8	Φ24	Φ18	91	18*48*8	
OT 034	KM90	A	14.9	13	Φ24	Φ15	88	—	
OT 035	TO50	RD008-09	15.8	15.8	Φ32.3	Φ23	120	—	
OT 036	TO76	RD022	20	22	Φ40	Φ29	140	—	
OT 037	BUSKA	4GL	14	14	Φ31	Φ13	87.5	26*42	
OT 038	B6322	S03 0202	10	10	Φ21	Φ15	90	16*34*7.5	
OT 039	HEROPUCH N/M	S03 0202	10	10	Φ21	Φ15	90	16*34*7.5	
OT 040	B6324		12	12	Φ22	Φ15	90	16*35*7	
OT 041	HEROPUCH SN/M		12	12	Φ22	Φ15	90	16*35*7	
OT 042	B6320	S06 0201	10	10	Φ18	Φ15	90	14*34*6	
OT 043	HEROPUCH O/M	S06 0201	10	10	Φ18	Φ15	90	14*34*6	
OT 044	TL43N	TASOON	10	10	Φ20	Φ15	62	—	
OT 045	SIMSON50	S50	13	13	Φ24	Φ16	85	18*36*6	
OT 046	G41	G41	10	13.5	Φ19	Φ14	62	—	
OT 047	TL33		10	8.65	Φ16	Φ12	58	—	
OT 048	36CC	2AFCM	8.6	8.6	Φ16	Φ8	52	—	
OT 049	CDI		14.25	14.25	Φ25	Φ10	83.2	—	
OT 050	MH54	MH 54	10	10	Φ21	Φ16	85	—	
OT 051	ATV250-115	G-115	17	18	Φ29	Φ21	115	—	
OT 052	ATV250-117	G-117	17	18	Φ29	Φ21	117	—	
OT 053	1AD	1AD	15.5	15.5	Φ29	Φ19	110	—	
OT 054	PG50M	MB DAKAR	12	12	Φ20.11	Φ15	76	—	
OT055	PG50M+加大	MB DAKAR	12	12	Φ22	Φ15	76	—	
OT056	YU1	a	8	8	Φ17	Φ14	61	—	
OT 057	SSBOC	GIRAUDO	12	12	Φ22	Φ15	76		
OT 058	51A	B051	12	14	Φ22	Φ15	85		



PREMIUM CONNECTING ROD

CAPT. No.	Vehicle Model	Part No.	Connecting Rod Spec.				Center Distance	Crank Pin	Remark
			Thickness		Bore Size			Spec.	
			Big End	Small End	Big End	Small End			

New Development & other models (Motorcycle)

OT 059	64A	B064	11.8	11.8	Φ22.035	Φ16	80		
OT 060	UT31	—	10.4	8.8	Φ16	Φ8	47	12*26.5*6	
OT 061	FREE	TVS-111	17	17	Φ31	Φ24	132		



連桿粗胚整型機

鍛造粗胚需經特殊模具整壓以便進行後續工程,如此可確保連桿之對稱性不因鍛造之過程而產生不規則形變!

Forging part hydraulic press machine

Forging raw material must be shaped by certain design of tooling, to protect the symmetry after the forging process.

雙面研磨機

連桿經雙面研磨後,以此平面為後續加工之基準面,因此其平面公差需控制於0.05mm以內.

Vertical faces grinding machine

This process to build the basic flat for the connecting procedures, the tolerance of thickness must be controlled within 0.05mm



表面滲碳熱處理設備

包括氣體滲碳爐, 淬油槽, 清洗槽及回火爐, 經由一連貫之流程, 使連桿表面滲碳層達到0.8-1.4mm, 硬度HRC59-63, 但心部組織硬度介於HRC30-40, 呈現“外硬內軟”, 耐磨又有韌性, 不易斷裂

Skin carburization equipment

Including the process of carburization, quenching, cleaning & tempering. The carburization depth can reach 0.8~1.4 mm, Hardness on surface between HRC59~63, Inside Hardness between HRC30~40. Increase the worn resistance & stress. Not easy to be broken!



高週波退火設備

針對未鍍銅之連桿,桿部做局部退火處理,以免桿部因滲碳熱處理硬度過高而斷裂,經此處理之連桿在破壞測試時可彎折超過90度角而不斷裂!

High Frequency tempering machine

Process the design without copper plating ,decrease the Hardness of mast, increase the bend resistance, MAST can be bended over 90 degrees angle without breakage!

內孔研磨機

利用高轉速砂輪20000-30000rpm,將連桿做初步之研磨,預留0.025-0.030mm為搪磨加工餘量,此工程在確保連桿大小孔徑之中心距離並將孔徑控制於搪磨加工範圍

Holes grinding machine

Speed of spindle between 20000~30000 rpm,preserve 0.025~0.030mm less than standard size for honing process,the importance on controlling the distance between two holes!



美國製搪磨加工機

分兩道搪磨程序,粗搪磨利用CBN磨石拉出30-45度夾角之交叉紋路,以利於軸承之潤滑作用,精搪磨將粗搪磨所形成之波峰磨削,以達到標準之表面粗糙度,此搪磨機可控制真圓度及直筒度於0.003mm(3 μ)以內!

American Honing machine

Semi-finished honing with CBN stone ,make the crossing lines angle between 30 to 45, Finished honing remove the high-points of previous process,control the roundness & barrel of hole within 0.003mm(3 μ)!



CAPT. ENGINE TECHNOLOGY INC.

No. 287, Sec. 3 Ming Teh N.Rd. Tou-Liu City, Yun-Lin Hsien, Taiwan

Tel:+886-5-5328511(Rep.) Fax:+886-5-5320867

Email : ming.yang2@msa.hinet.net

<http://www.mingyang-group.2u.com.tw>

Captain your way